



A13-1-1



A13-1-2



A13-2-3



A13-2-4



A 13-3-5



A 13-3-6



A 13-3-7



A13-4-8



A13-4-9



A13-5-10



A13-5-11



A13-6-12



A13-6-13



A 13-7-14



南部公園 A13-7-15



A13-8-16



A13-8-17



A13-8-18

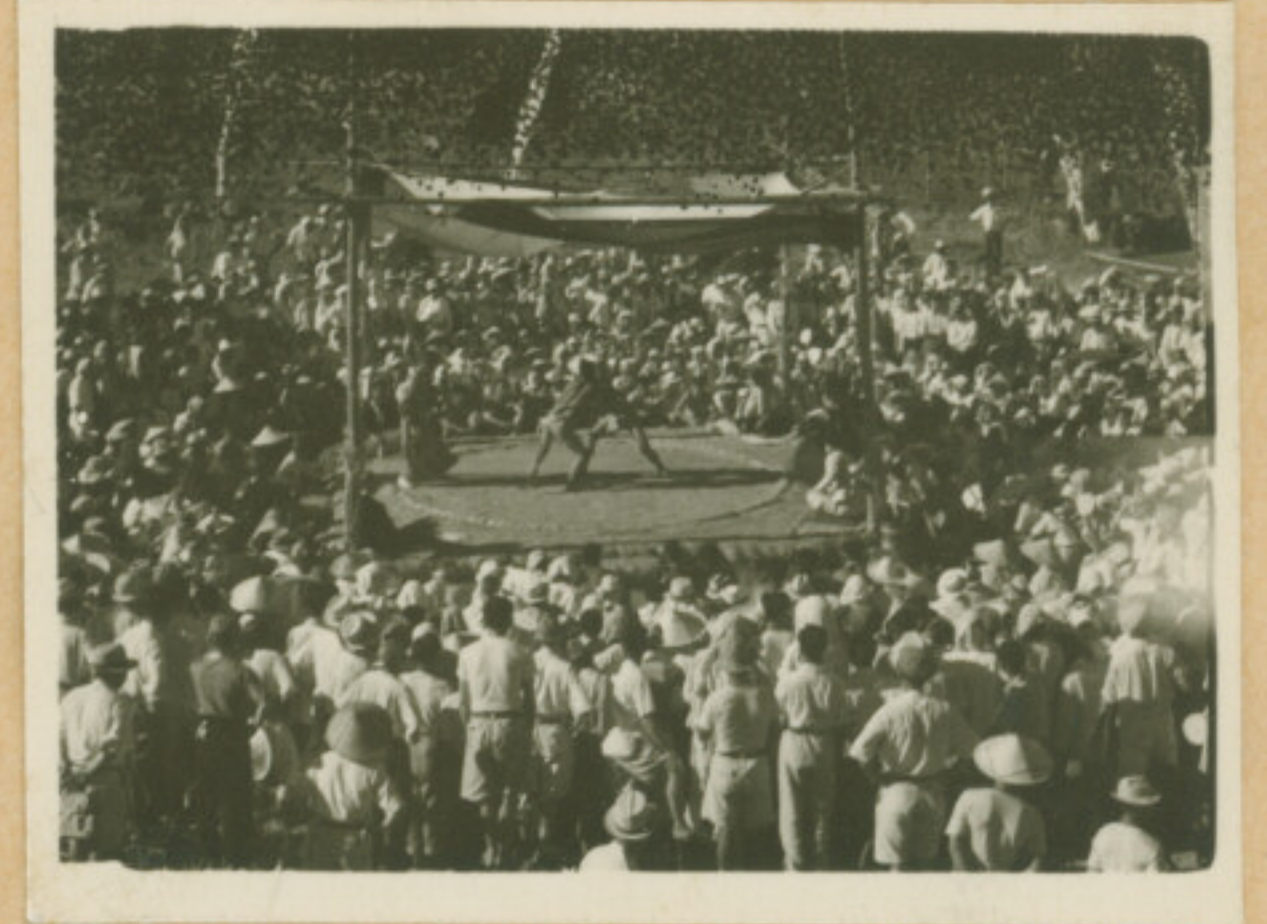


A13-9-22

市由利政司=恩臺公園
土庫



A13-9-19



A13-9-23



A13-9-20



A13-9-24



A13-9-21



A13-10-25



A13-10-26



A13-10-27



A13-10-28



A13-11-29



A13-11-30



A13-11-31



A13-12-32



A13-12-33



A13-12-34



A13-13-35



A13-13-36



A13-14-37



A13-14-38



A13-15-39



A13-15-40



A13-16-41



A13-16-42



A13-16-43



A13-17-44



A13-17-45



A13-18-46



足中山

A13-18-47



墓地

A13-18-48



瑞現寺横 陸軍墓地 A13-18-50



A13-18-49



A13-19-51



A13-19-53



A13-19-52



A13-19-54



A13-20-55



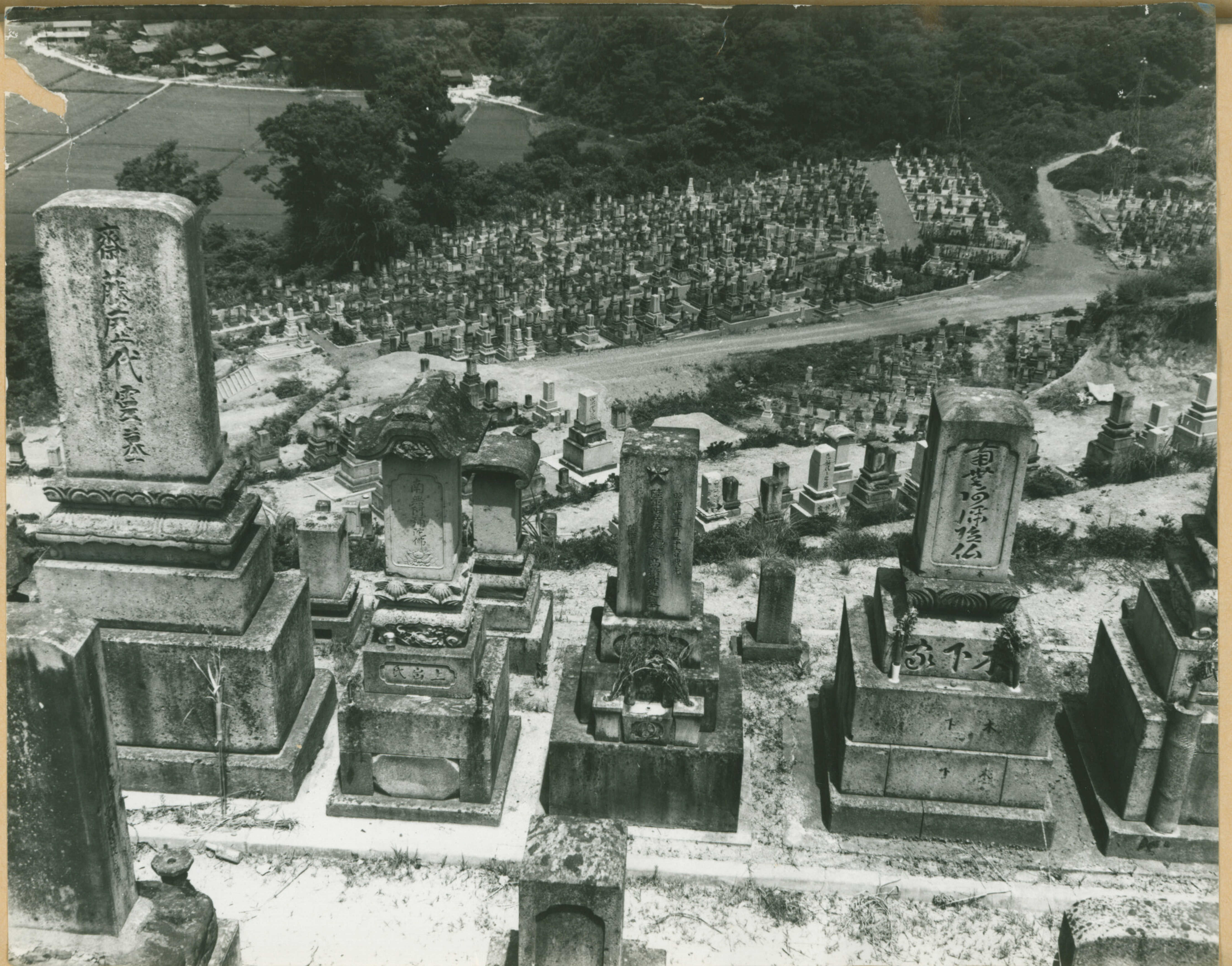
A13-20-56



A13-20-57



A13-20-58



齋藤屋代雲三

南無阿彌陀佛

氏三

昭和五年十月廿九日
齋藤屋代雲三

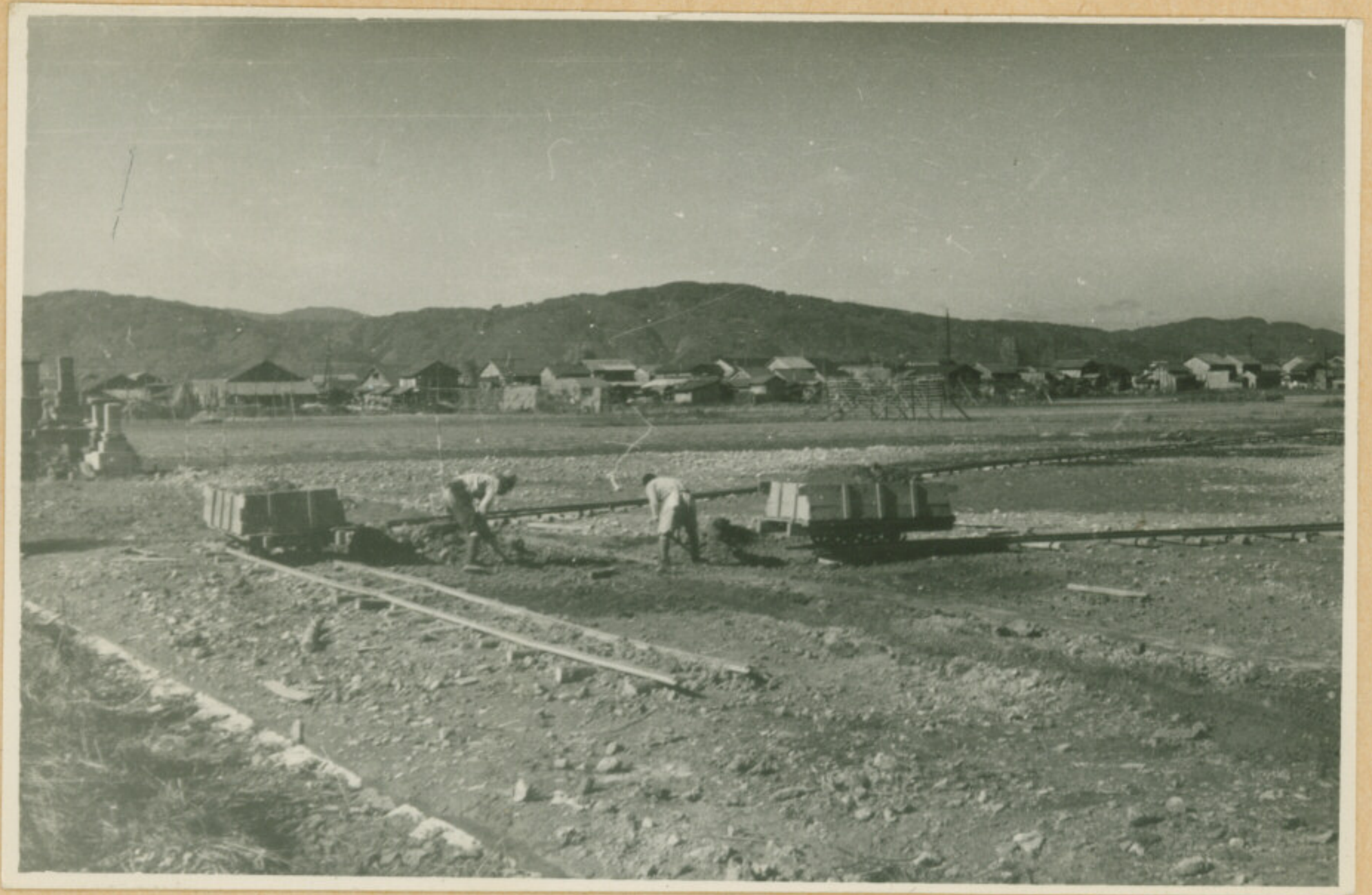
南無阿彌陀佛

下木

下木

下木

A13-21-59



A 13-22-60



A 13-23-61



A13-24-62



A13-24-63



A13-24-64



A13-25-65



A13-25-66



A13-25-67



A13-25-68



A13-26-69



A13-26-70



A13-27-71



A13-28-72



A13-28-73



A13-29-74



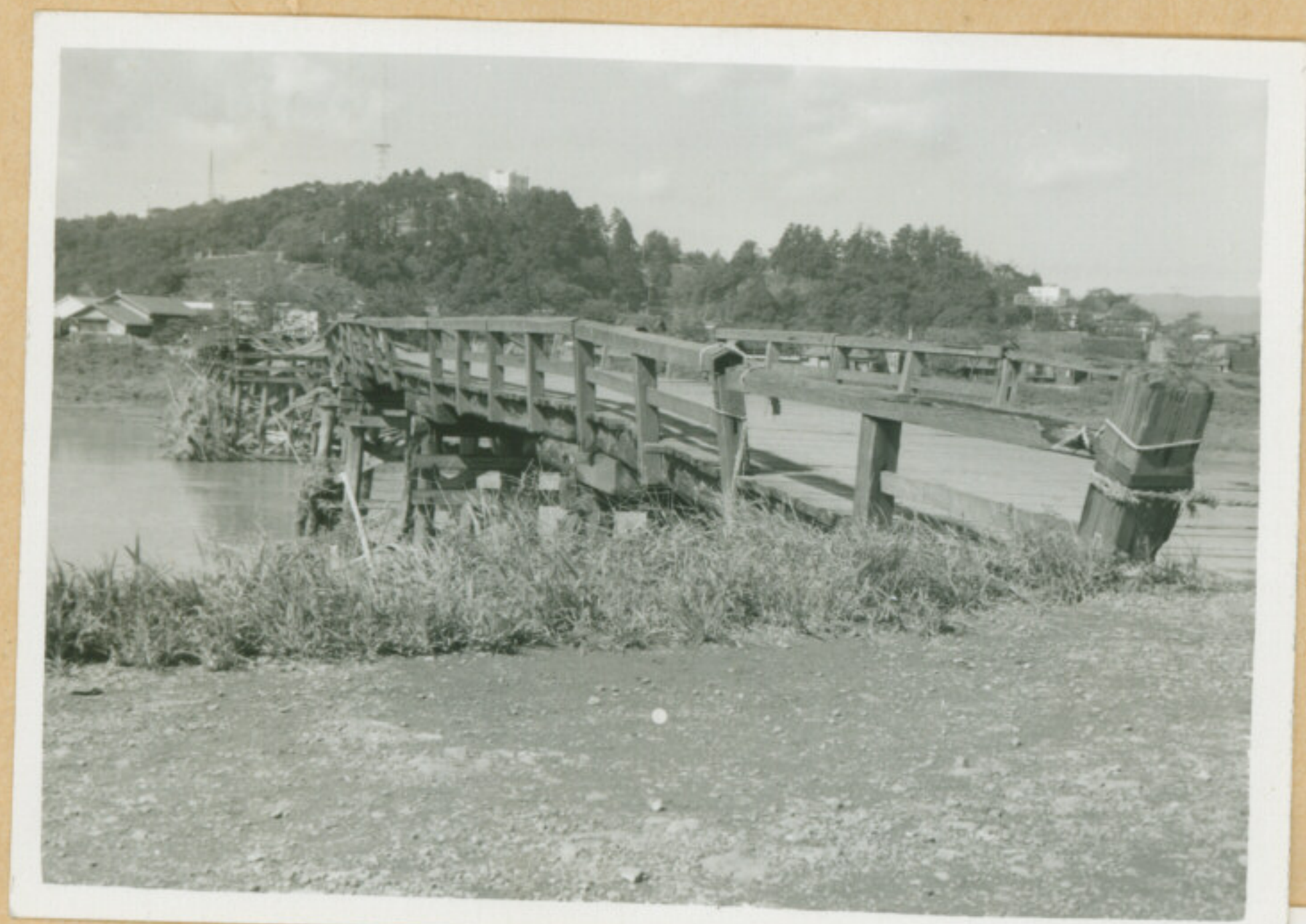
A13-30-75



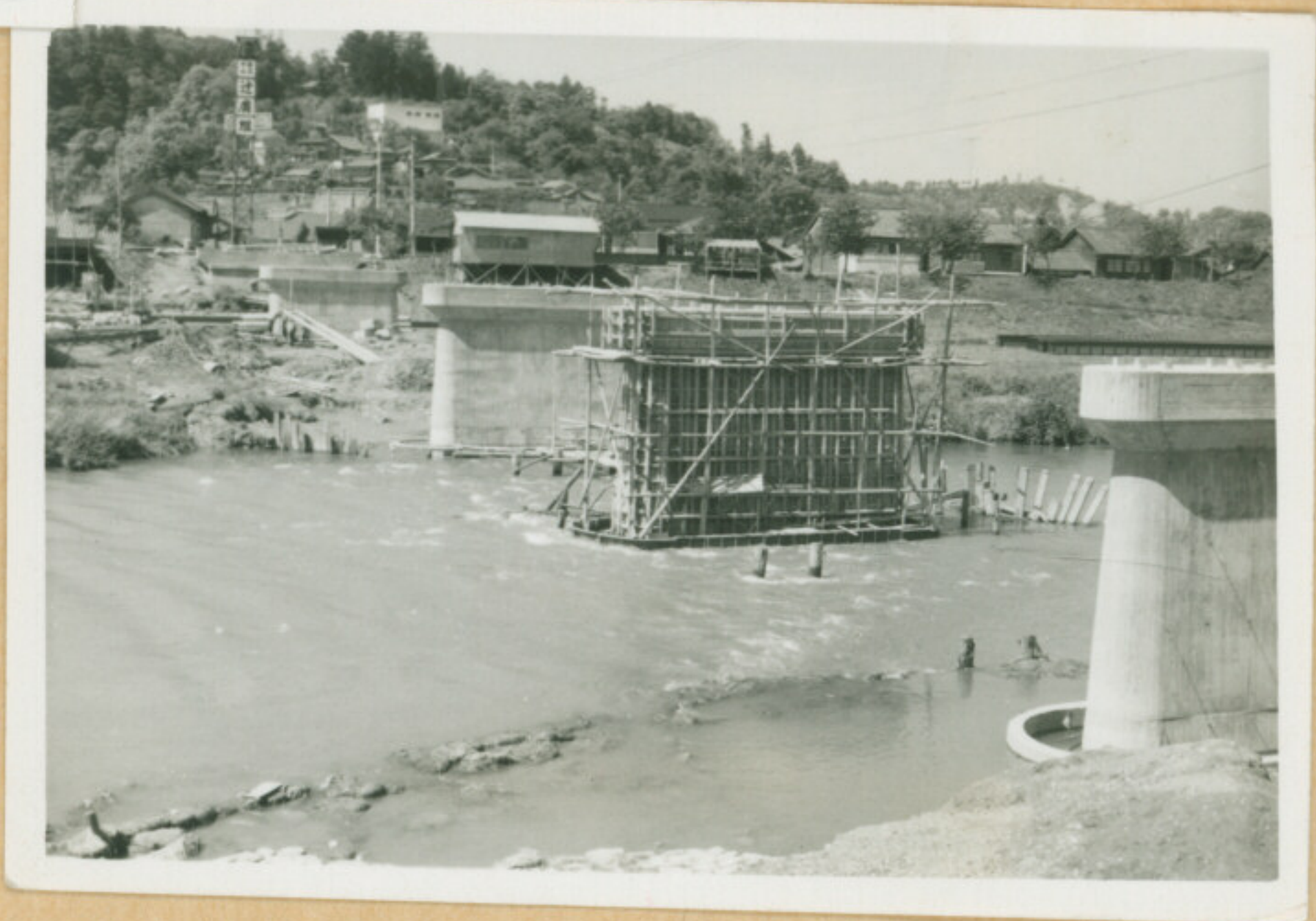
A13-30-76



A13-30-77



A13-30-78



A13-30-79



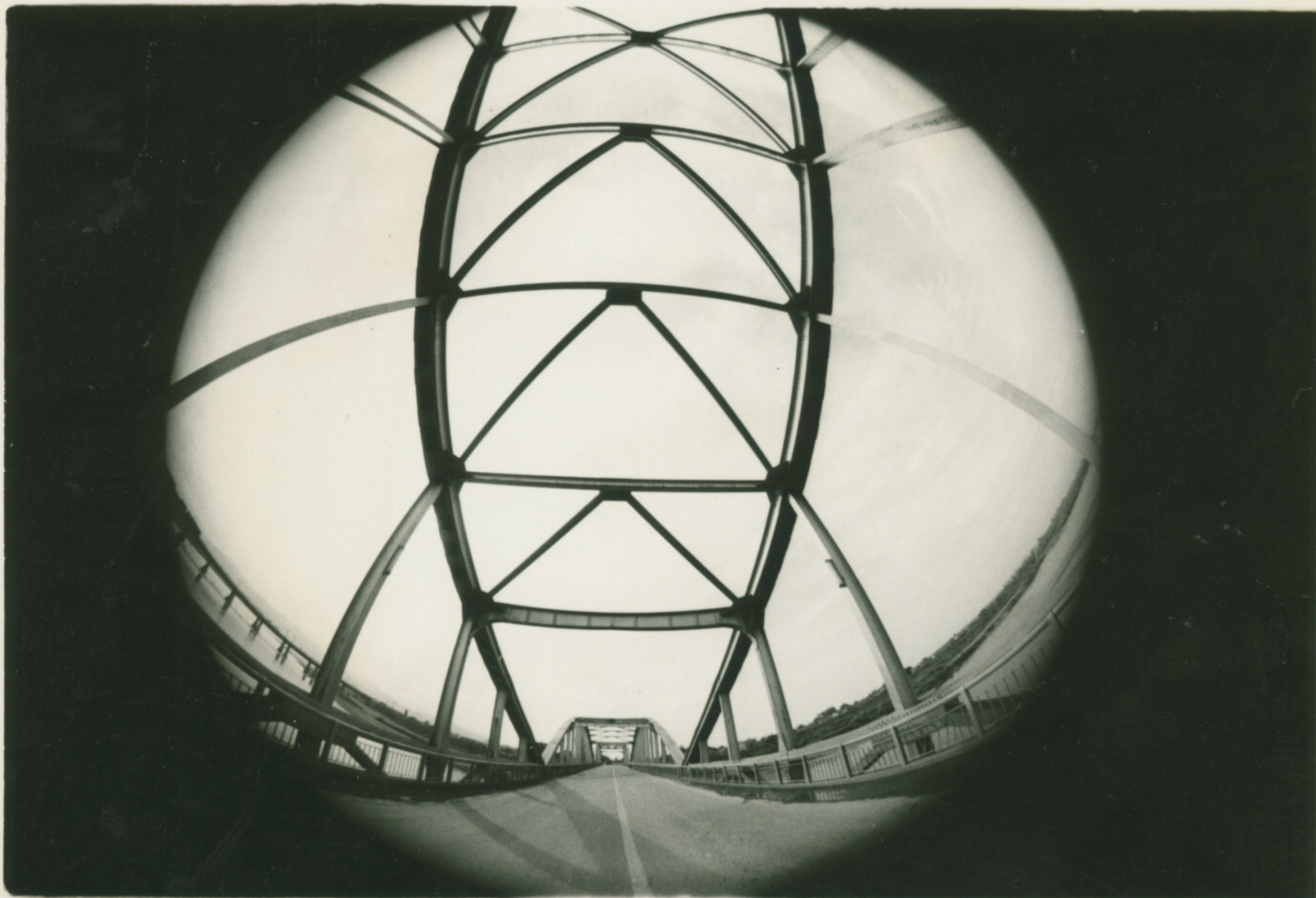
A13-30-80



A13-31-81



A13-31-82



A13-31-83



A 13-32-84



足羽山トンネル工事 A 13-32-85



A13-33-86



A13-33-87



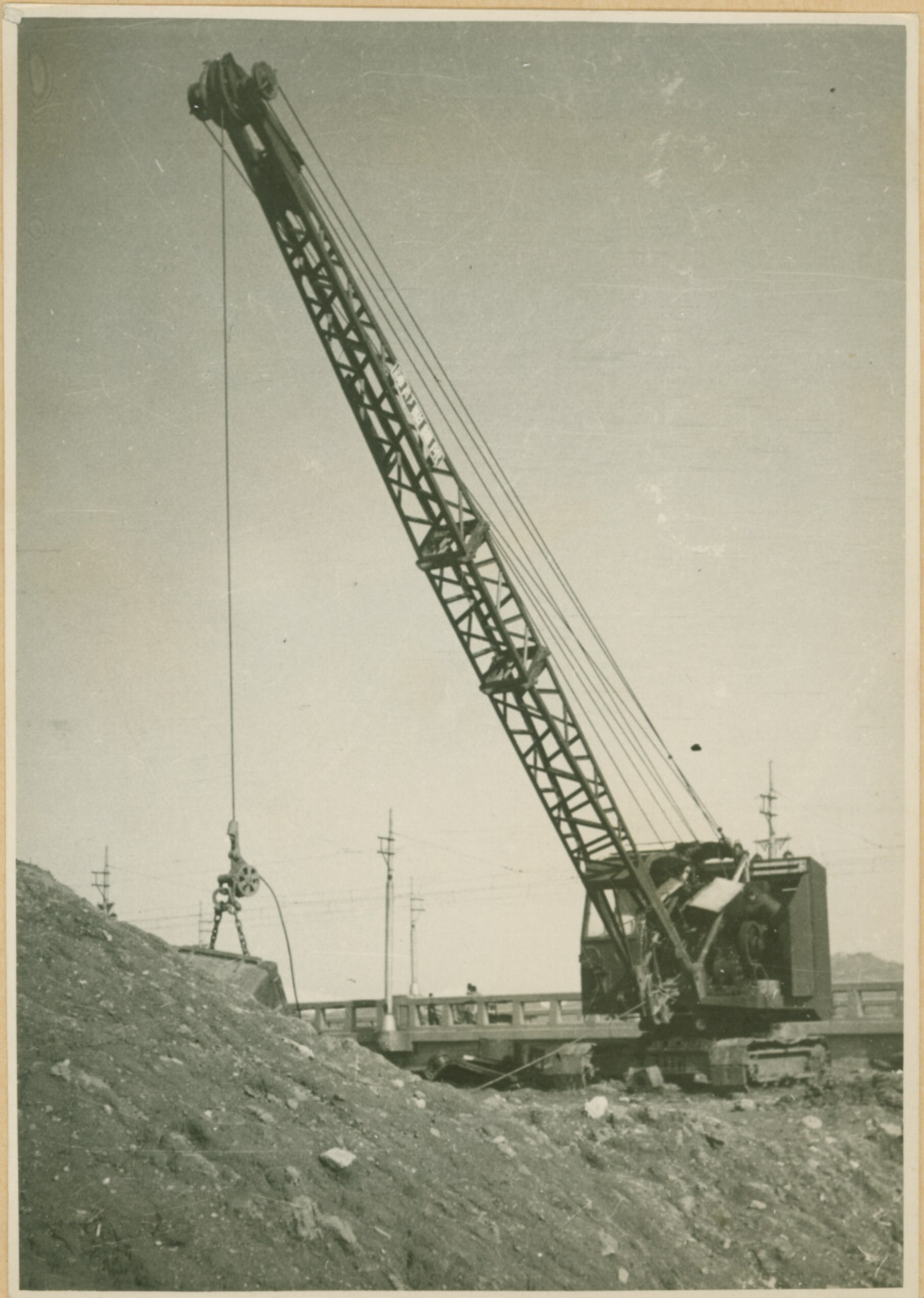
A13-34-88



A13-34-89



A13-35-90



A13-35-91



A13-36-92



A13-36-93



A13-37-94



A13-37-95



A13-37-96



A13-38-97



A13-38-98



A13-38-99



A13-38-100

A13-38-101



A13-39-1

A13-39



A13-39



A13-39-102-2

A 2-40-96-5

A 2-3-10



A 13-431-

A 13-39-102-1



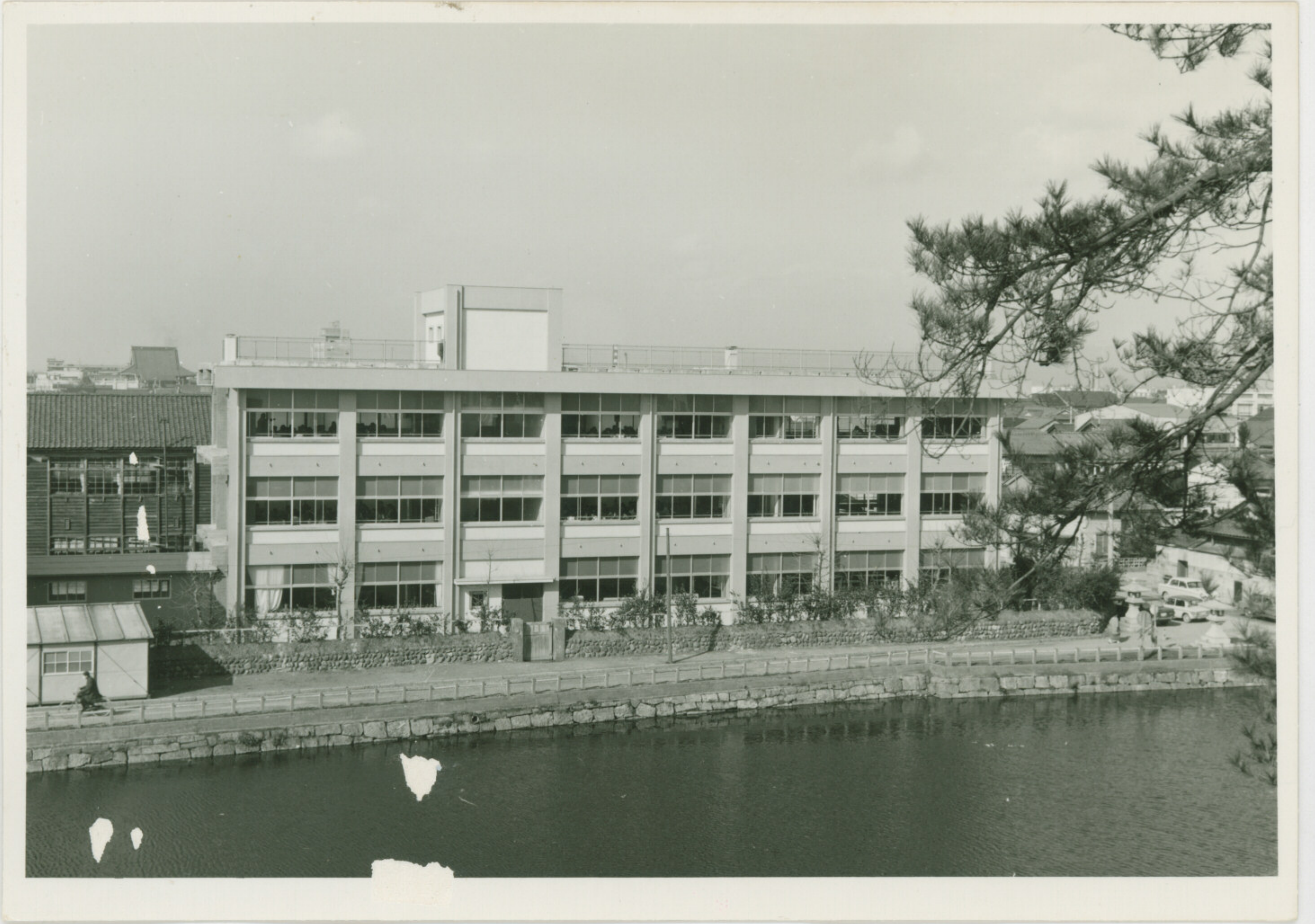
A2-46-56-5

46-3-10



A13-57

A13-39-102-2



A13-40-103

64-3-10

A13-39-102

3-20-92

01-8-97

GA-

A13-37-

113-49-103-2