



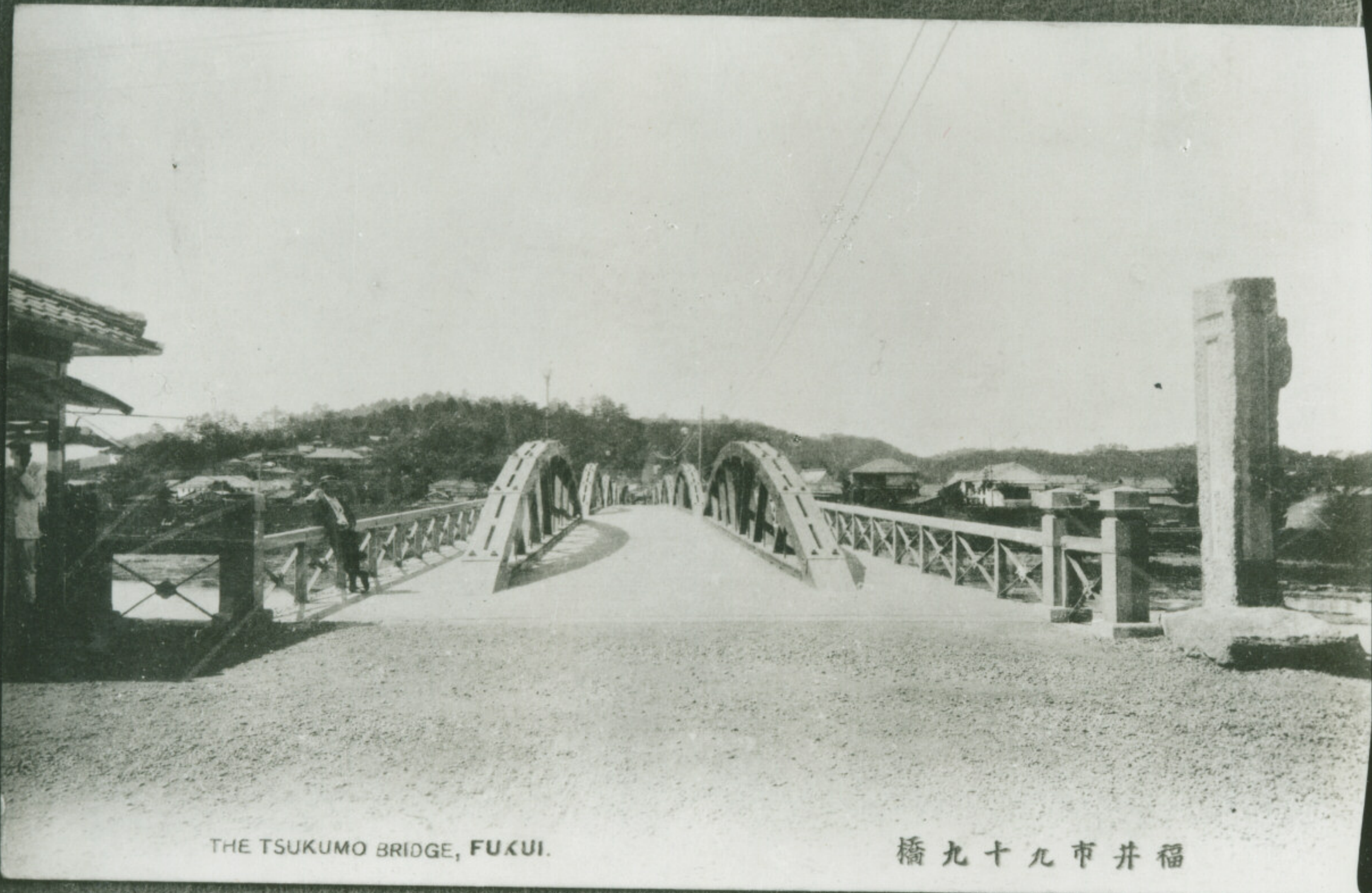
No.1. たるま屋前通り

A11-1-1



No.2 梟片付近

A11-1-2



THE TSUKUMO BRIDGE, FUKUI.

橋九十九市井福

No3

A11-2-3



No4

A11-2-4

No5

No6

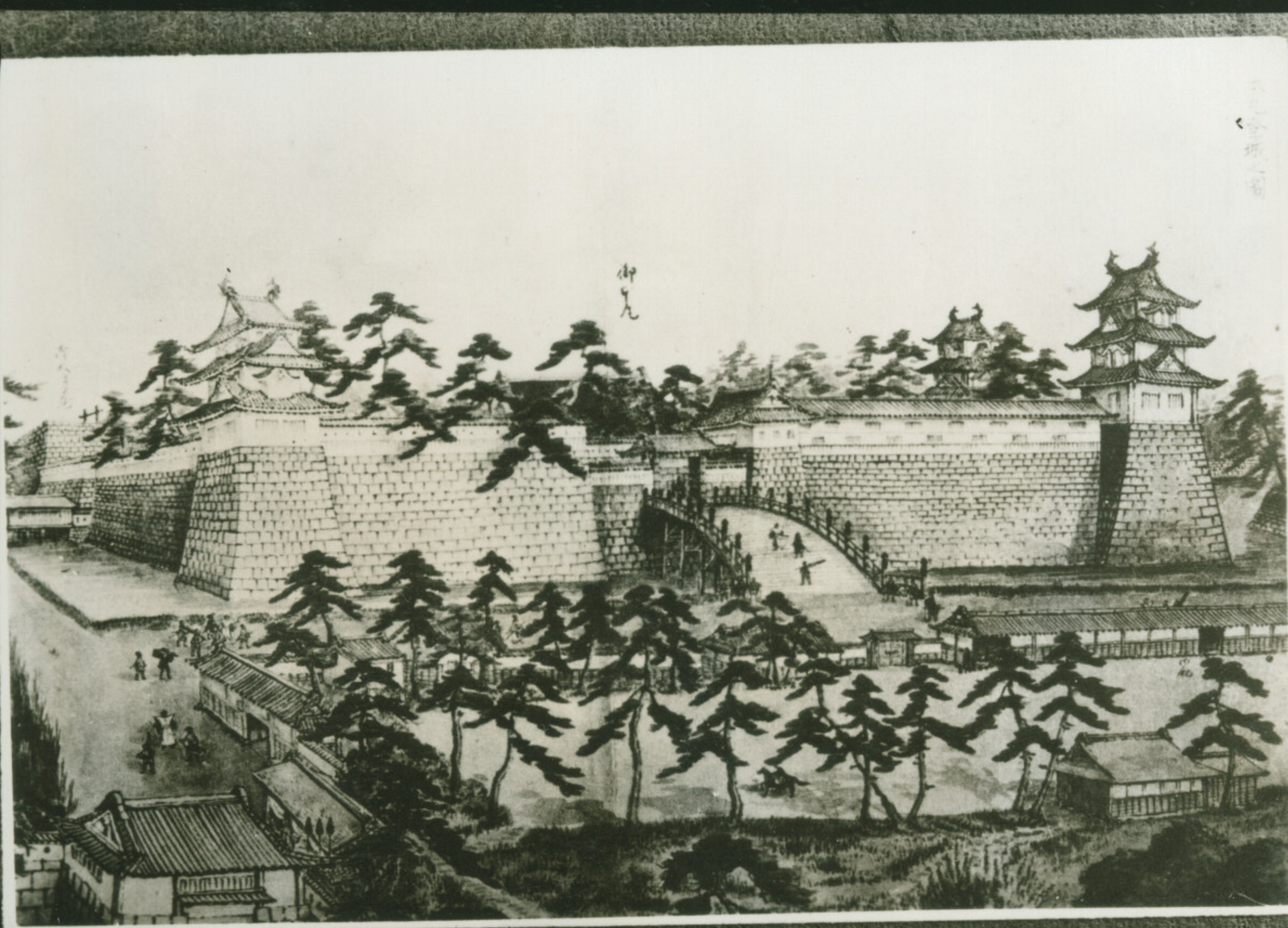


View of Tsukumo bridge at Fukui.

橋九十九 (井福)

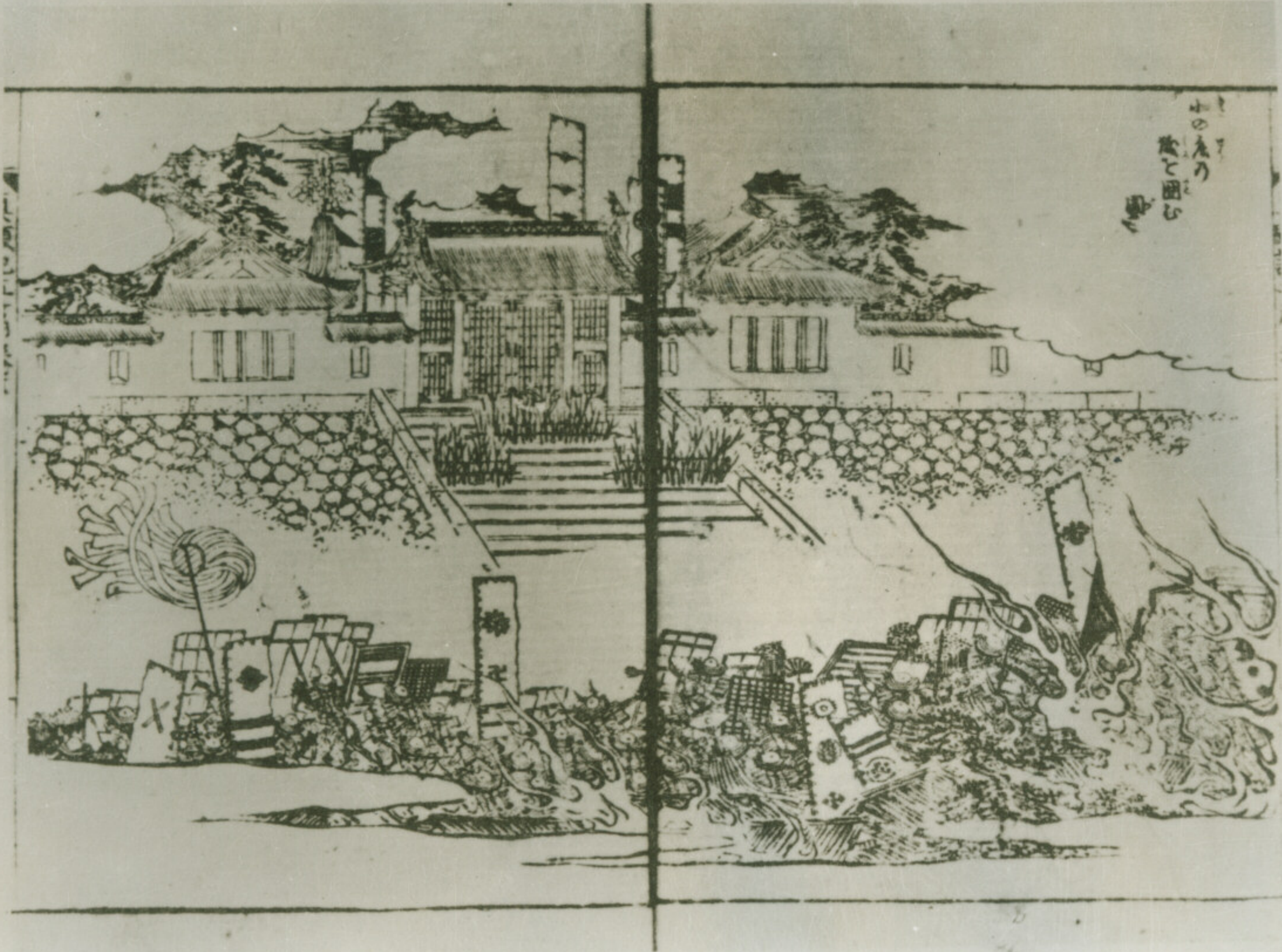
No5

A11-3-5



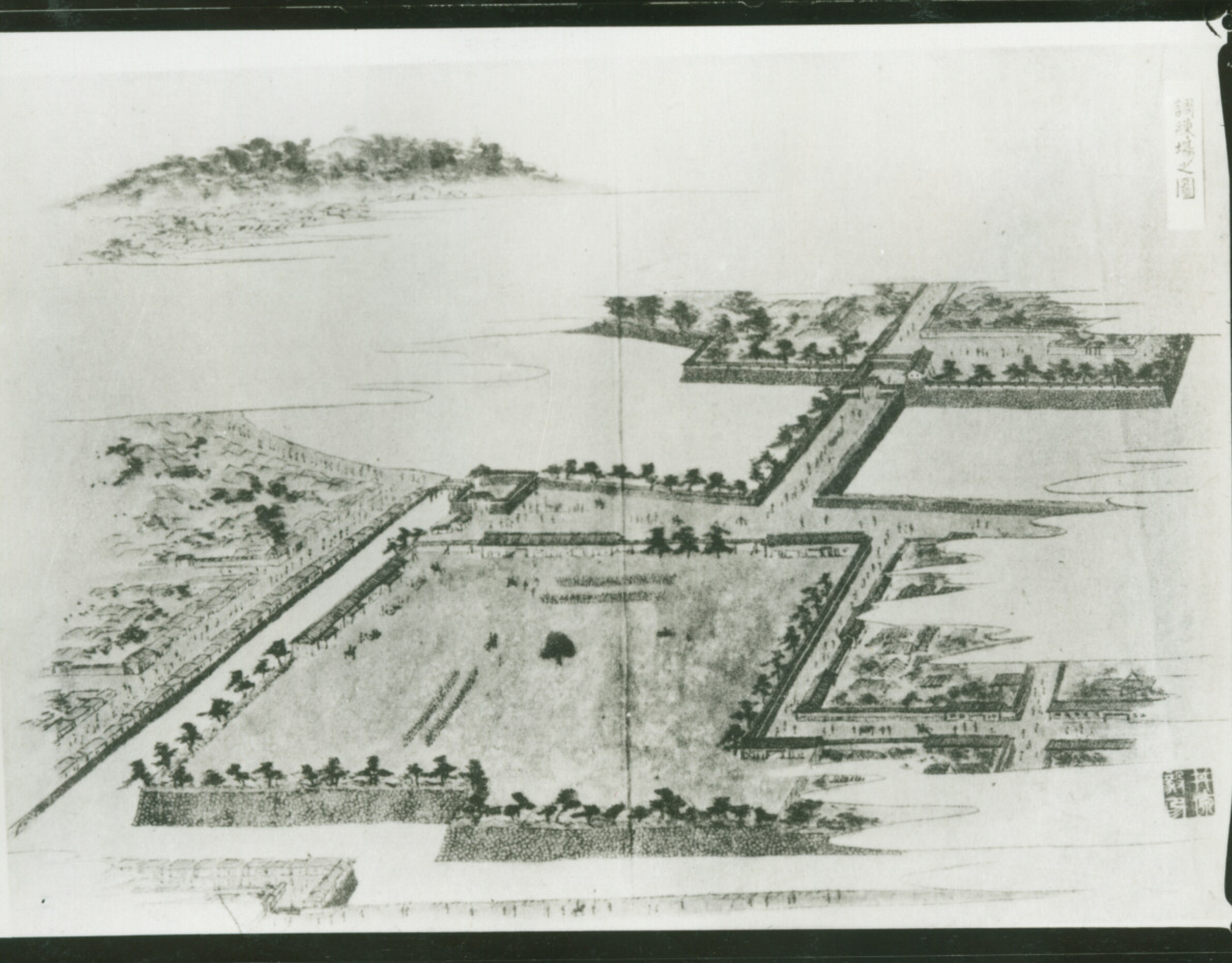
No6

A11-3-6



No7

A11-4-7



No8

A11-4-8

No9

No10



No9 福井駅付近

A11-5-9



No10 福屋デパート

A11-5-10



No11 曙覧の歌碑 (照平町)

A11-6-11

No13



No12 曙覧の宅跡

A11-6-12



No 13 福井城のお堀

A11-7-13



大和ビルから 市街地西方

A11-7-14

震災前

昭和22年頃



A11-8-15



A11-8-16

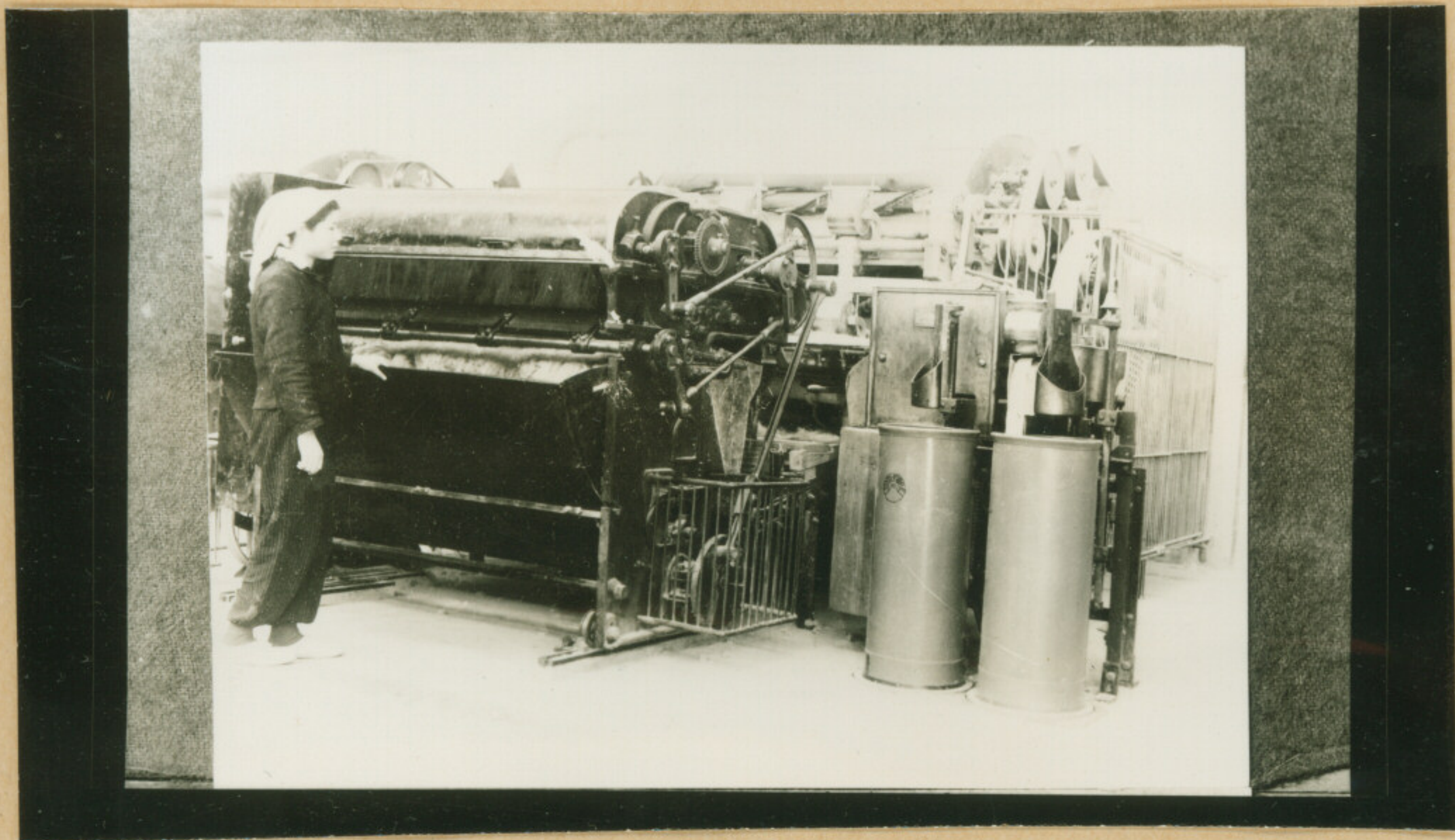


No1



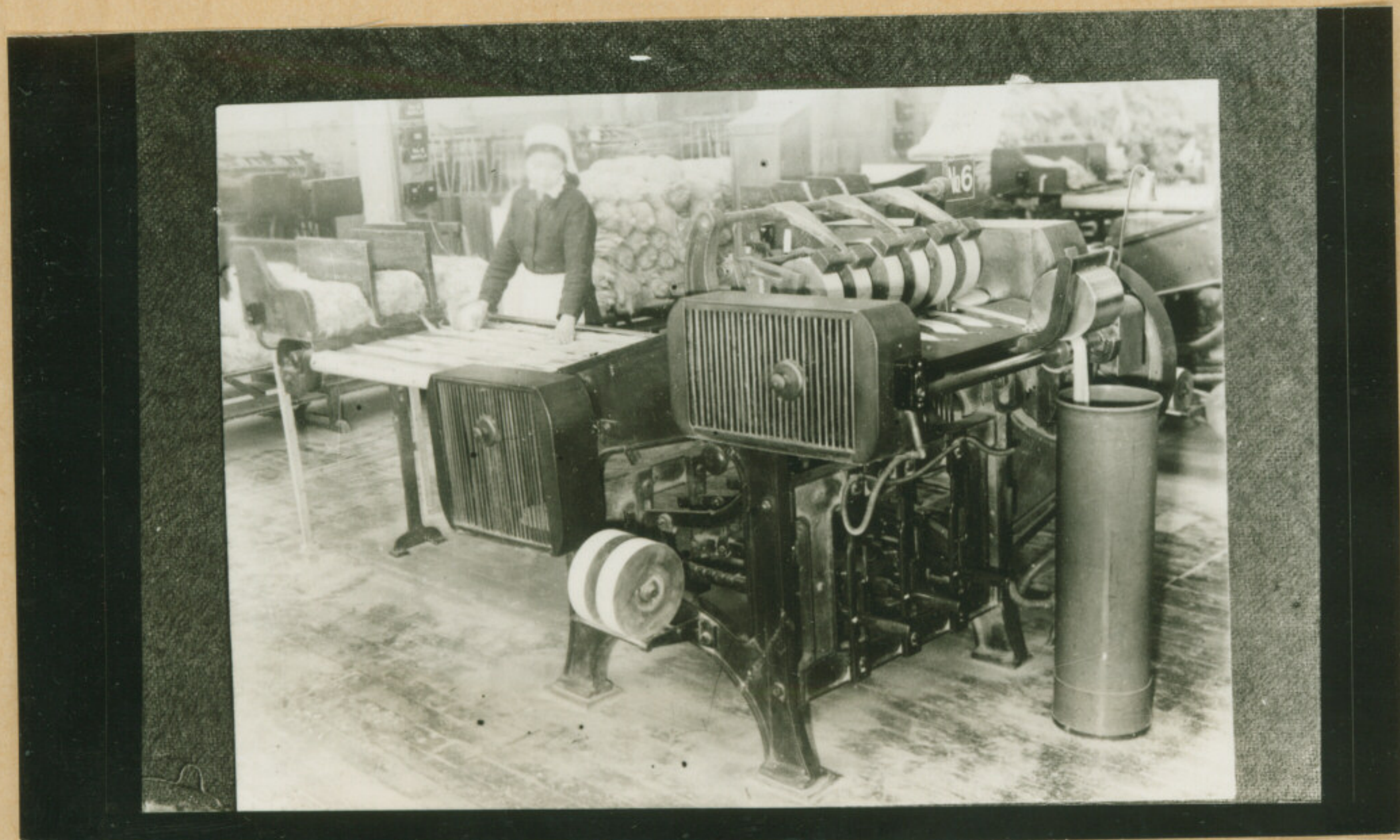
A11-9-17

No2



A11-9-18

No3



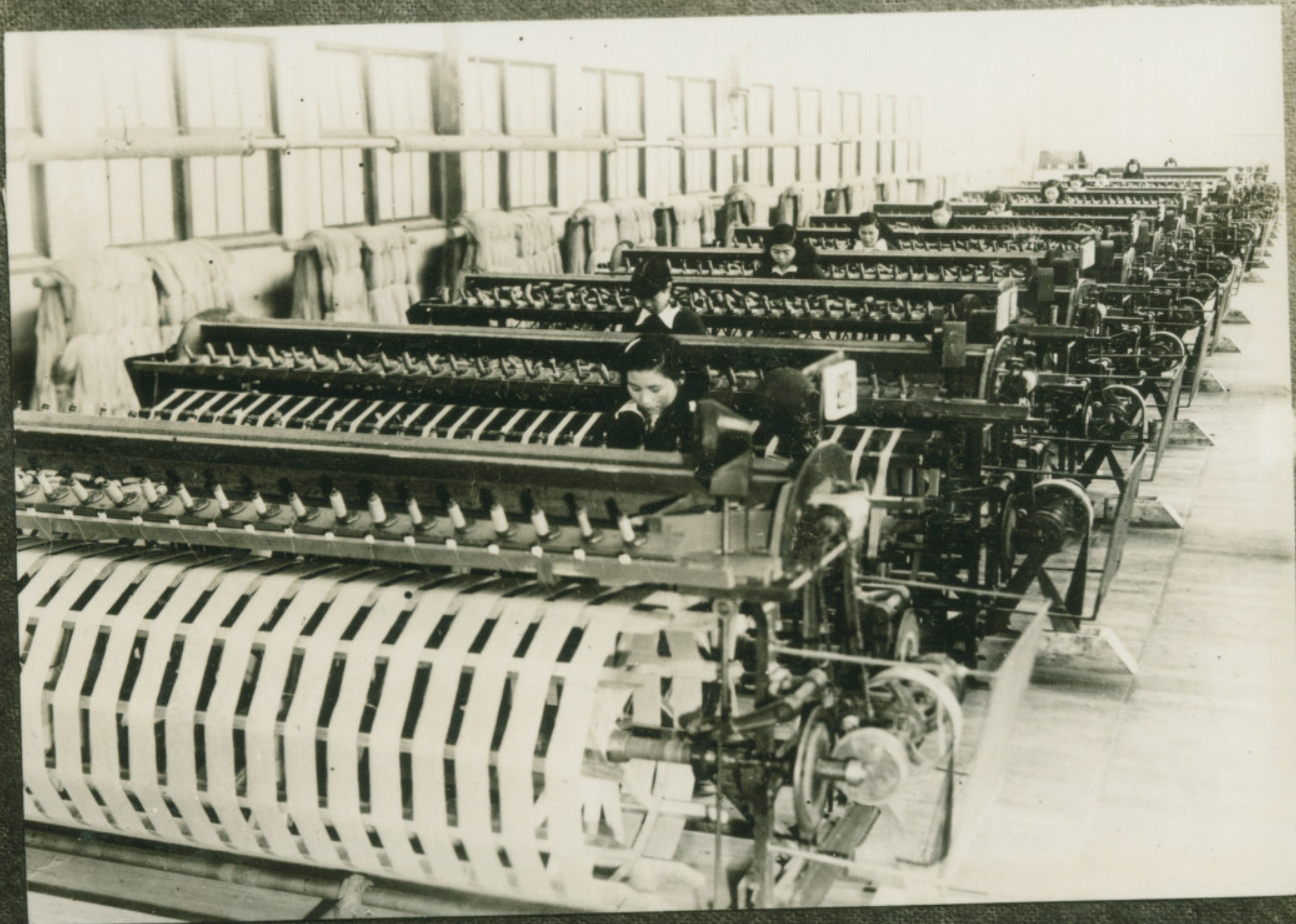
A11-9-19



N04

A11-10-20

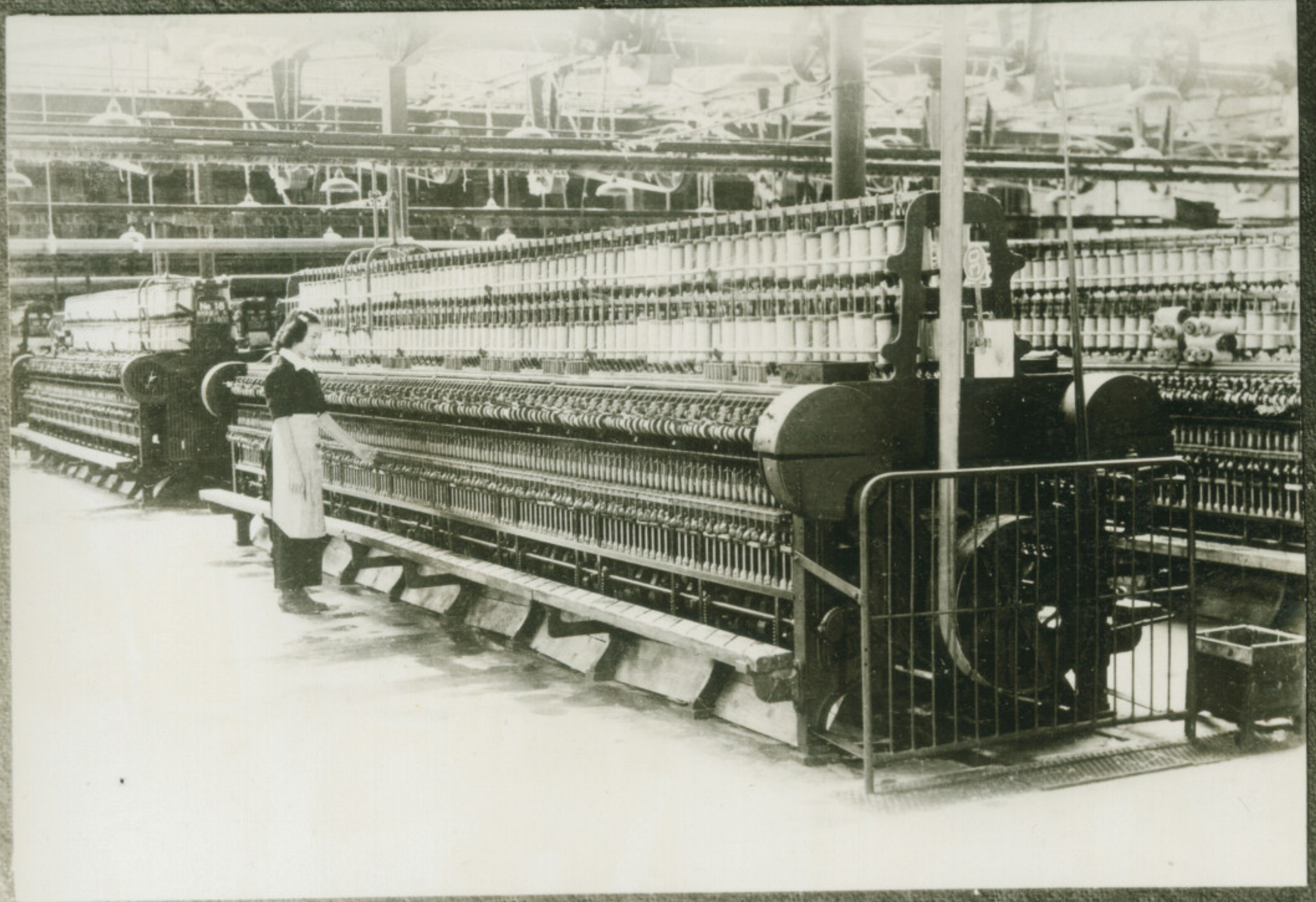
No 6



N05

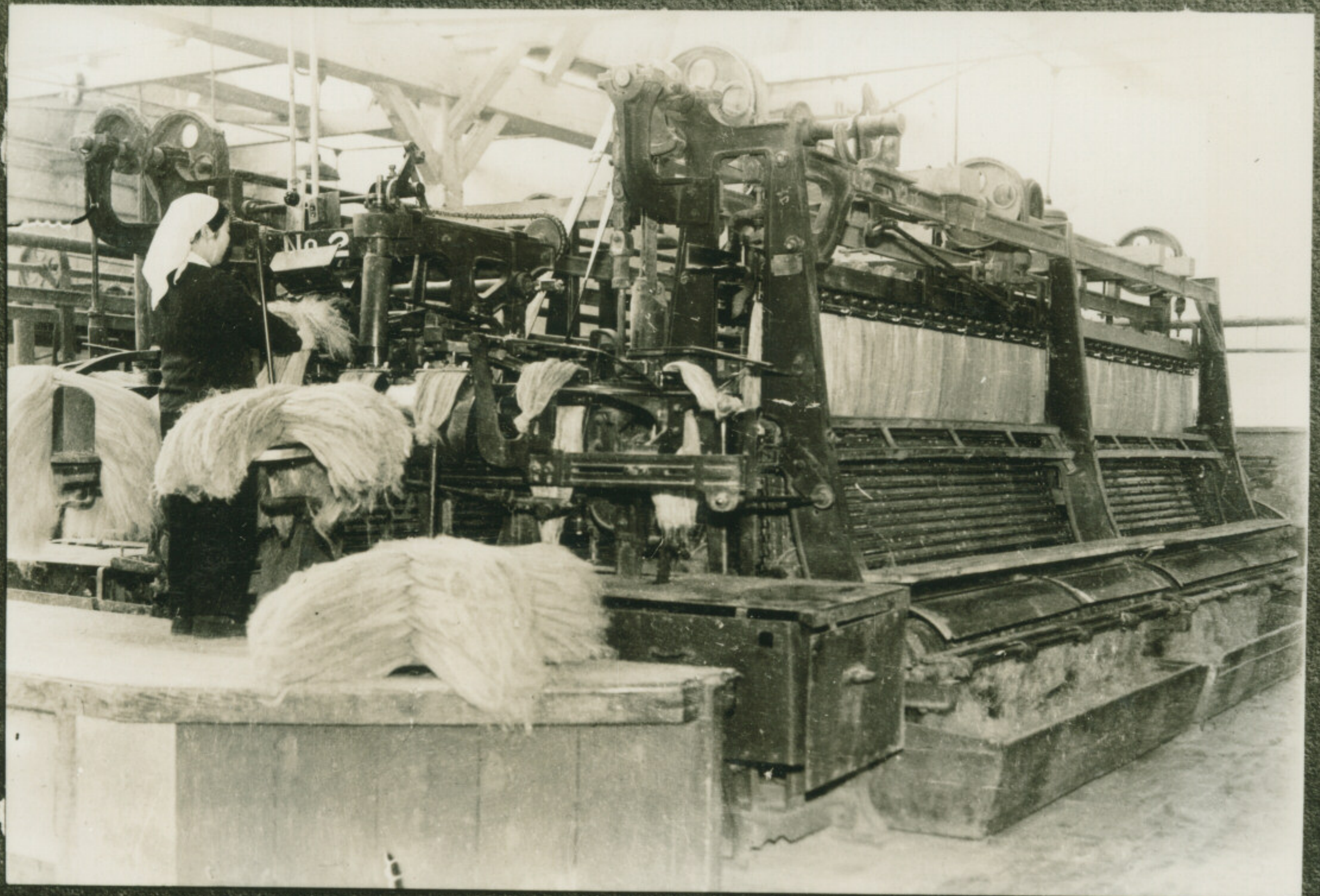
A11-10-21

No 7



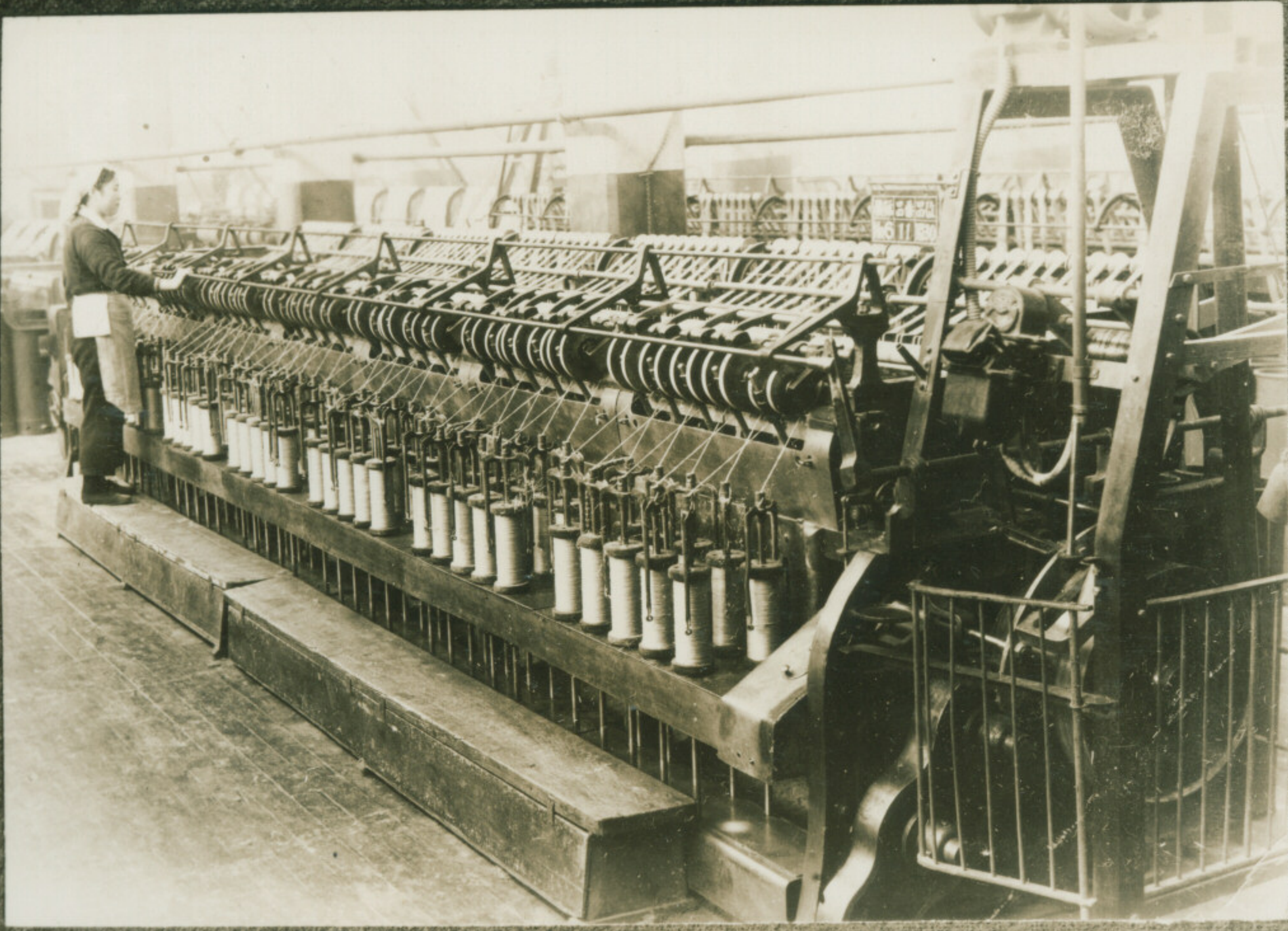
No 6

A11-11-22



No 7

A11-11-23



NO 8

A 11-12-24

No 10



NO 9

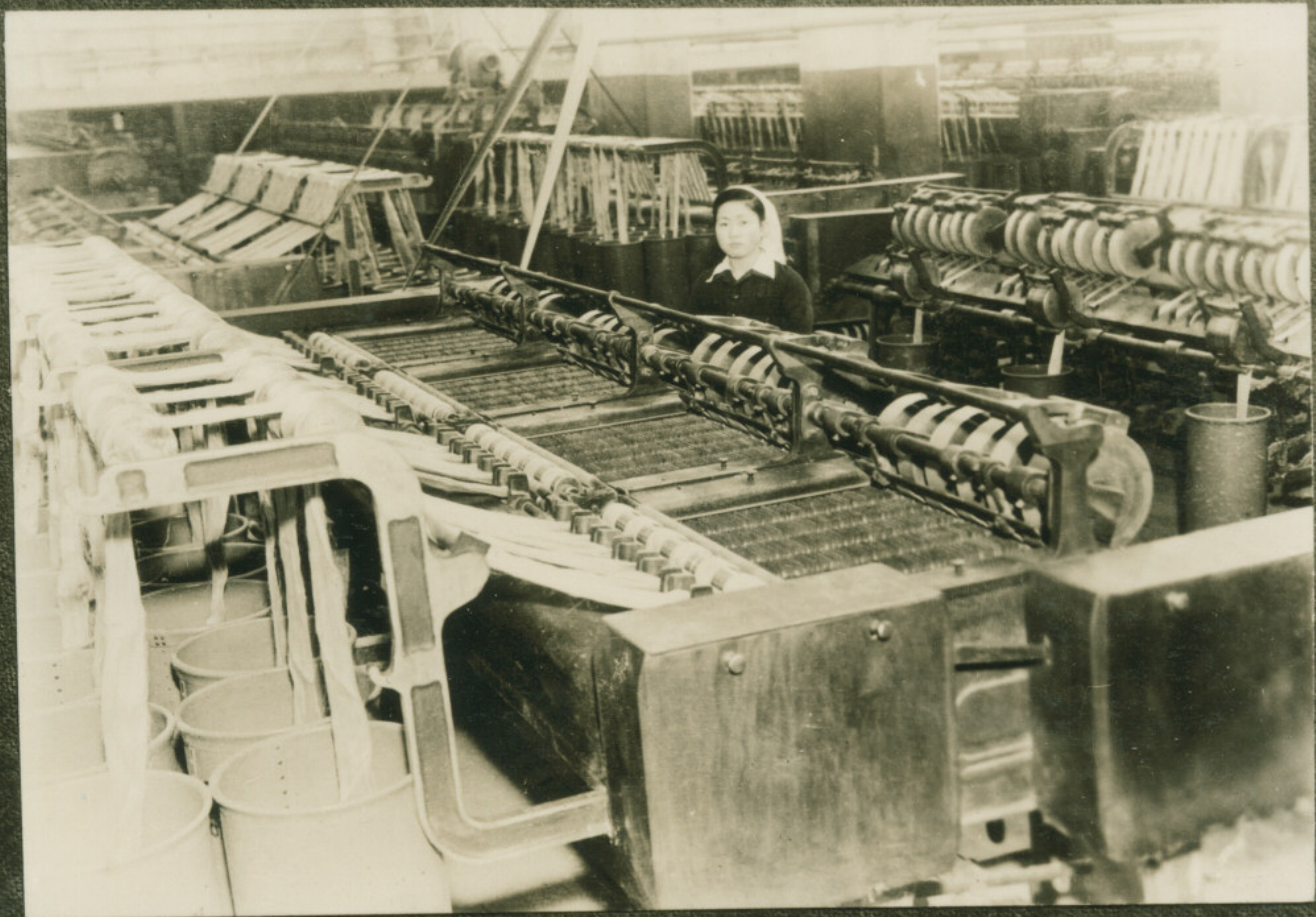
A 11-12-25

No 11



No 10

A 11-13-26



No 11

A 11-13-27



No 12

A11-14-28